

STANDARD FEATURES

- Uniformly graduated scales
- Accurate to ± 1% of range span
- 3½", 4½", 6" and 8½" dial sizes
- Adjustable pointer
- Fast response
- Inert gas fill – ideal for applications where Mercury is prohibited
- Stainless steel bulb
- Stainless steel (302) interlocked spiral armor over stainless steel (347) capillary tubing (lengths up to 100 ft.)
- Bronze bushed rotary type brass movement – stainless steel movement optional at extra cost
- Rigid or adjustable angle forms

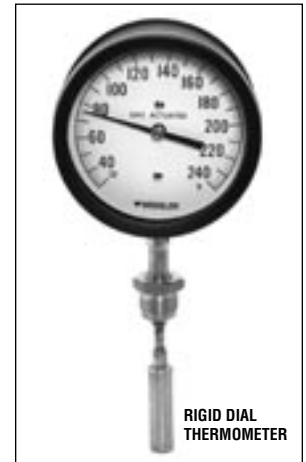
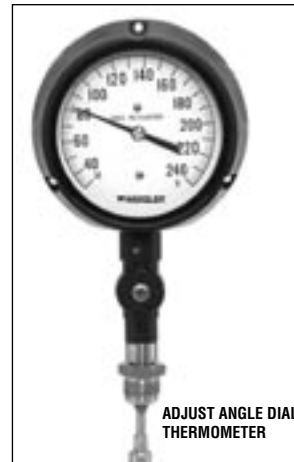


TABLE 1

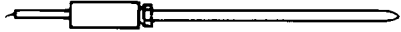

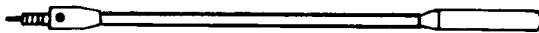
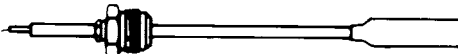

REMOTE AND DIRECT MOUNTED TYPES		
BASE CATALOG NO.	DIAL SIZE	TYPE
313B	3½"	REMOTE MOUNTED
413B	4½"	
613B	6"	
813B	8½"	
453B	4½"	ALL STAINLESS STEEL ADJUSTABLE ANGLE
333B	3½"	ADJUSTABLE ANGLE
433B	4½"	
633B	6"	
833B	8½"	
323B	3½"	RIGID (NOT ADJUSTABLE)
423B	4½"	
623B	6"	
823B	8½"	

STANDARD TYPE "E" CAPILLARY TUBING



0.280" O.D. Stainless Steel Interlocked Spiral (302) Armor Over Stainless Steel Capillary (347)

TABLE 2 – BULB TYPE AND SIZE

FOR ALL MOUNTED TYPES		CODE
PLAIN BULB FOR AIR TEMPERATURE  <p>12" Long .375 Diameter</p> <p>Optional Fittings: A16 Bulb Mounting Bracket</p>		A
PLAIN BULB FOR LIQUIDS IN OPENTANKS, VATS, SINKS, ETC.  <p>6" Long .50" Diameter</p> <p>Optional Fittings: A1 1/2 NPT Compression Fitting A12-2 Set Screw Flange</p>		C
PLAIN BULB WITH 12" BENDABLE EXTENSION  <p>3" x .375" Diameter Bulb</p> <p>3" x .625" Diameter Bulb</p>	1 E	
SLIDING UNION CONNECTION WITH 12" BENDABLE EXTENSION  <p>3" x .375" Diameter Bulb, 1/2 NPT Swivel Nut</p> <p>Optional Fittings: All "K" Series Thermowells 2F2 Flange</p>		3
SLIDING UNION CONNECTION WITH 12" BENDABLE EXTENSION  <p>3" x .625" Diameter Bulb, 1"-20 NEF-2B Swivel Nut</p> <p>Optional Fittings: All "5F" Series Thermowells All "5F" Series Bushings</p>		N

DIRECT MOUNTED TYPES

3/8" O.D. – 1/2"-14 NPSM Swivel Nut

Union Connection (fixed length)
Wells, bushings or flanges required
for installation



CODE	STEM LENGTH	FITS WELL*
4	4"	4 1/2" O.A.
6	6"	6 1/2" O.A.
9	9"	9 1/4" O.A.
2	12"	12 1/4" O.A.

*Uses "K" Series Thermowells (See page)

5/8" O.D. – 1"-20 NEF-2B Swivel Nut**



CODE	STEM LENGTH	FITS WELL*
J	3 1/2"	4 1/2" O.A.
K	6"	6 3/4" O.A.
L	9"	9 3/4" O.A.
M	12"	12 3/4" O.A.

**Uses "5F" Series Thermowells
"5F" Series Bushings (See page)

TABLE 3 – CASE STYLES

WALL MOUNTED TYPES	
CODE	CASE TYPE
P	Molded polypropylene, Turret Type Standard – 4 1/2" dial size only.
A	Aluminum, Rear Flange Black Aluminum Bayonet Ring Standard – 3 1/2", 6" dial sizes. Extra cost option – 4 1/2" dial size.
G	Aluminum, Rear Flange Chrome Like Bayonet Ring Standard – 8 1/2" dial size only.
X	Stainless Steel, Rear Flange Stainless Steel Bayonet Ring Extra cost option – 3 1/2" or 4 1/2" dial sizes only.
FLUSH PANEL MOUNTED STYLES	
E	Aluminum Case Black Threaded Front Flange Ring Extra cost option – all dial sizes.
B	Aluminum Case, Semi-Flush Mounting Black Aluminum Bayonet Ring Extra cost option – 3 1/2", 4 1/2", 6" dial sizes.
H	Aluminum Case, Semi-Flush Mounting Chrome like Bayonet Ring Extra cost option – 8 1/2" dial size only.
V	Stainless Steel Case and Bayonet Ring Front Flange – Semi-Flush Mounting Extra cost option – 4 1/2" dial sizes only.
W	Aluminum Case Hinged Front Plastic Bezel Extra cost option – 4 1/2", 6" dial sizes only.
DIRECT MOUNTED TYPES	
CODE	CASE TYPE
P	Molded polypropylene, Turret Type Standard on 4 1/2" dial size. (Not available in other dial sizes.)
C	Aluminum, Flangeless Black Aluminum Bayonet Ring. Standard on 3 1/2" and 6" dial sizes. Extra cost option for 4 1/2" dial size.
I	Aluminum, Flangeless Chrome Like Bayonet Ring. Standard on 8 1/2" dial size. (Not available in other dial sizes.)
Y	Stainless Steel, Flangeless Stainless Steel Bayonet Ring Standard on base catalog No. 453B Extra cost option for all other 4 1/2" dial sizes (Not available in other dial sizes.)

For complete case description and dimensions refer to pages 108-111



How To Order Gas-Actuated Dial Thermometers

TABLE 4

CONNECTION LOCATION CODE	AVAILABILITY			
	ALL SS ADJ. ANGLE	ADJUST ANGLE	RIGID TYPE	REMOTE MOUNT
C = Center Back	•	•		
L = Lower		•	•	•
R = Rear			•	•

TABLE 5

CODE	CASE FEATURE
0	None
2	Flush mounting ring and contact
F	Flush mounting ring only
C	Contact

TABLE 6

CODE	CAPILLARY TYPE
E	Stainless steel armored
Q	PVC coated
X	None required

TABLE 7 – BULB DIMENSIONS

CODE	LENGTH	DIAMETER
NE	12"	3/8 (.375)
GG	6"	1/2 (.50)
CE	3"	3/8 (.375)
CJ	3"	5/8 (.625)
EE	4"	3/8 (.375)
GE	6"	3/8 (.375)
KE	9"	3/8 (.375)
DJ	3 1/2"	5/8 (.625)
GJ	6"	5/8 (.625)
KJ	9"	5/8 (.625)
NJ	12"	5/8 (.625)

TABLE 9 – STANDARD RANGES

CODE	FAHRENHEIT	CODE	DUAL (F&C)	CODE	CELCIUS
FA	-100/100	DA	-40/104F & -40/40C	CA	-100/100
FB	-40/110	DB	-40/180F & -40/82C	CB	-40/180
FC	-40/180	DD	-20/120F & -30/50C	CC	-20/120
FD	-20/120	DD	0/120F & -20/50C	CD	0/100
FE	0/100	DE	0/150F & -18/66C	CE	0/120
FF	0/120	DF	0/300F & -20/120C	CF	0/150
FG	0/150	DG	0/500F & -18/260C	CG	0/200
FH	0/200	DH	30/240F & 0/115C	CH	0/300
FI	0/300	DI	50/550F & 10/290C	CI	0/400
FJ	0/400	DJ	200/1000F & 95/540C	CJ	0/500
FK	0/500	DK	400/1200F & 200/650C	CK	200/650
FL	20/240	DL	0/1000F & 18/38C	CM	30/50
FM	30/240	DO	50/750F & 10/399C	CR	30/150
FN	50/550				
FO	50/750				
FP	200/1000				
FQ	400/1200				

TABLE 10

CODE	LENGTH OF CAPILLARY TUBING
00	None
2	2'
12	12'
1C	100'

TABLE 8

CODE	OPTIONS
0	NONE
D	25" bendable extension
E	30" bendable extension

HOW TO ORDER

4 5 3 B 4 Y C 0 X NE 0 FA 00 ()

- Specify 4-digit Base Catalog No. from Table 1 _____
- Add Bulb Digit from Table 2 _____
- Add Case Style Digit from Table 3 _____
- Add Connection Location Digit from Table 4 _____
- Add Case Feature Digit from Table 5 (enter "0" if none) _____
- Add Capillary Type Digit from Table 6 (enter "X" if none required) _____
- Add Bulb Dimension Digits from Table 7 _____
- Add Bendable extension Length Digit Options from Table 8 (enter "0" if none required) _____
- Add Range Code Digits from Table 9 _____
- Add Length of Capillary Digit(s) from Table 10 (enter "00" if none required) _____
- Add Optional Feature Code from Page 112 if needed _____