

**STANDARD FEATURES**

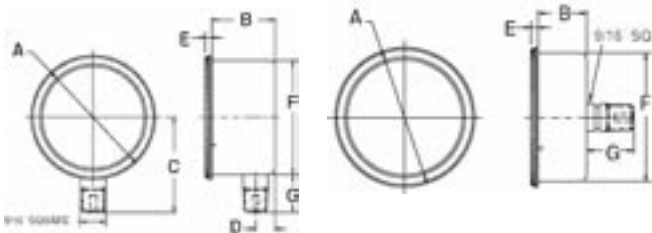
- Available in 2½" and 3½" sizes
- Black steel case with ¼ turn polycarbonate window
- Diaphragm capsule for sensitive low pressure measurements
- ASME B40.1 Grade A accuracy (±2-1-2%)
- Brass movement and socket
- ¼ NPT lower connection available in 2½" and 3½" sizes
- ¼ NPT back connection available in 2½" size
- Panel mounting kit available for 2½" back connection gauges

**GAUGE DIMENSIONS – Lower Connection**

GAUGE TYPE/SIZE			A	B	C	D	E	F	G
			¼ NPT						
LOWER CONN.	BK73 2.5"	INCH	2.86	1.43	2.16	.34	.18	2.59	.79
		MM	73	36	55	9	5	66	20
	BK74 3.5"	INCH	3.95	1.43	2.60	.34	.18	3.63	.79
		MM	100	36	66	9	5	92	20

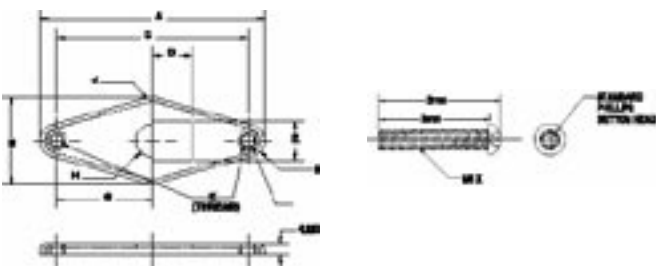
**GAUGE DIMENSIONS – Back Connection**

GAUGE TYPE/SIZE			A	B	E	F	G
			¼ NPT				
BACK CONN.	BK73 2.5"	INCH	2.86	.97	.18	2.59	1.05
		MM	73	25	5	66	27



**PANEL MOUNT ASSEMBLY for BK73**

PART NO.	A	B	C	D	E	F	G	H	J	K	
2½"	INCH	3.27	1.26	2.80	0.57	0.56	0.47	1.40	0.24	0.10	M5X0.8
CLAMP	MM	83	32	71	14.6	14.2	12	35.5	6	2.50	M5X0.8



**CATALOG NUMBERS**

DIAL SIZE	2½"		3½"
CONNECTION LOCATION	BOTTOM	BACK*	BOTTOM
CONNECTION NPT	¼	¼	¼
STANDARD RANGES			
<b>Pressure</b>			
0/10 in.H <sub>2</sub> O	BK73TA4L	BK73TA4C	BK74TA4L
0/15 in.H <sub>2</sub> O	BK73TB4L	BK73TB4C	BK74TB4L
0/30 in.H <sub>2</sub> O	BK73TC4L	BK73TC4C	BK74TC4L
0/60 in.H <sub>2</sub> O	BK73TD4L	BK73TD4C	BK74TD4L
0/100 in.H <sub>2</sub> O	BK73TE4L	BK73TE4C	BK74TE4L
0/160 in.H <sub>2</sub> O	BK73TF4L	BK73TF4C	BK74TF4L
0/200 in.H <sub>2</sub> O	BK73TG4L	BK73TG4C	BK74TG4L
0/300 in.H <sub>2</sub> O	BK73TH4L	BK73TH4C	BK74TH4L
0/10 oz./in. <sup>2</sup>	BK73TJ4L	BK73TJ4C	BK74TJ4L
0/15 oz./in. <sup>2</sup>	BK73TK4L	BK73TK4C	BK74TK4L
0/30 oz./in. <sup>2</sup>	BK73TL4L	BK73TL4C	BK74TL4L
0/60 oz./in. <sup>2</sup>	BK73TM4L	BK73TM4C	BK74TM4L
0/100 oz./in. <sup>2</sup>	BK73TN4L	BK73TN4C	BK74TN4L
0/160 oz./in. <sup>2</sup>	BK73TP4L	BK73TP4C	BK74TP4L
0/250 oz./in. <sup>2</sup>	BK73TQ4L	BK73TQ4C	BK74TQ4L
0/3 psi	BK73TR4L	BK73TR4C	BK74TR4L
0/5 psi	BK73TS4L	BK73TS4C	BK74TS4L
0/10 psi	BK73TT4L	BK73TT4C	BK74TT4L
0/15 psi	BK73TU4L	BK73TU4C	BK74TU4L
<b>Vacuum</b>			
15/0 in.H <sub>2</sub> O	BK73TV4L	BK73TV4C	BK74TV4L
30/0 in.H <sub>2</sub> O	BK73TW4L	BK73TW4C	BK74TW4L
60/0 in.H <sub>2</sub> O	BK73TX4L	BK73TX4C	BK74TX4L
100/0 in.H <sub>2</sub> O	BK73TY4L	BK73TY4C	BK74TY4L
200/0 in.H <sub>2</sub> O	BK73TZ4L	BK73TZ4C	BK74TZ4L
15/0 oz./in. <sup>2</sup>	BK73NL4L	BK73NL4C	BK74NL4L
30/0 oz./in. <sup>2</sup>	BK73NA4L	BK73NA4C	BK74NA4L
60/0 oz./in. <sup>2</sup>	BK73NB4L	BK73NB4C	BK74NB4L
100/0 oz./in. <sup>2</sup>	BK73NC4L	BK73NC4C	BK74NC4L
<b>Compound</b>			
-10/10 in.H <sub>2</sub> O	BK73ND4L	BK73ND4C	BK74ND4L
-30/30 in.H <sub>2</sub> O	BK73NE4L	BK73NE4C	BK74NE4L
-30/30 oz./in. <sup>2</sup>	BK73NF4L	BK73NF4C	BK74NF4L
<b>DUAL SCALE</b>			
<b>Pressure</b>			
0/15 in.H <sub>2</sub> O and 0/9 oz./in. <sup>2</sup>	BK73NG4L	BK73NG4C	BK74NG4L
0/35 in.H <sub>2</sub> O and 0/20 oz./in. <sup>2</sup>	BK73NH4L	BK73NH4C	BK74NH4L
0/60 in.H <sub>2</sub> O and 0/35 oz./in. <sup>2</sup>	BK73NJ4L	BK73NJ4C	BK74NJ4L
0/100 in.H <sub>2</sub> O and 0/60 oz./in. <sup>2</sup>	BK73NK4L	BK73NK4C	BK74NK4L

\*Add XUC for panel mounting kit.  
Items in red denote factory stock. Black items have longer lead times – consult price sheet.